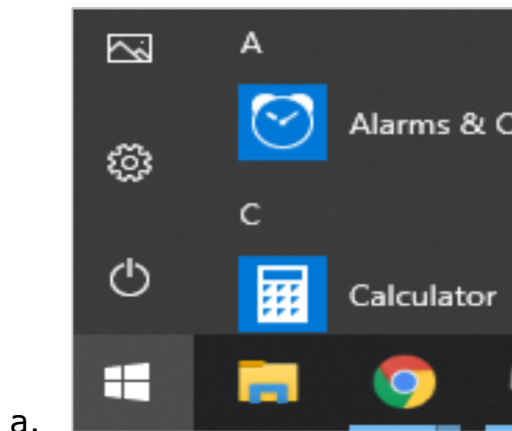


Transcend® Desktop Software

Download Instructions

Software Instructions

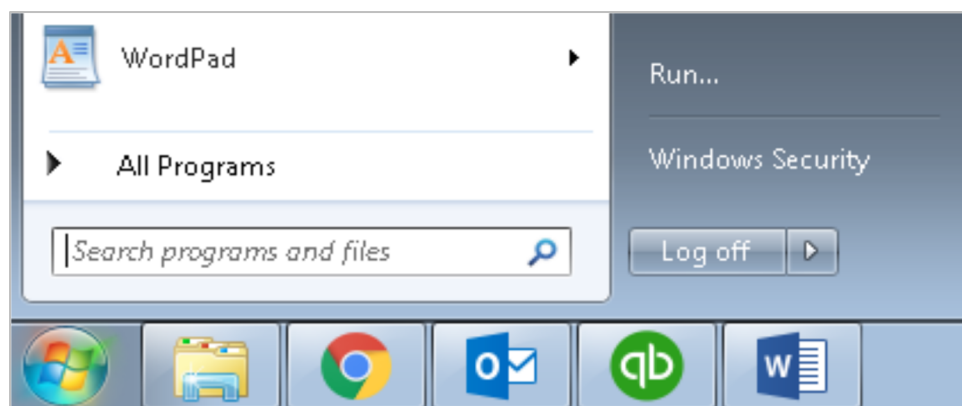
1. Install the correct [VCP Drivers](#) for your version of Windows. Reference the images below for your Windows Start button and menu to determine your version.



Windows 10



Windows 8, no start menu



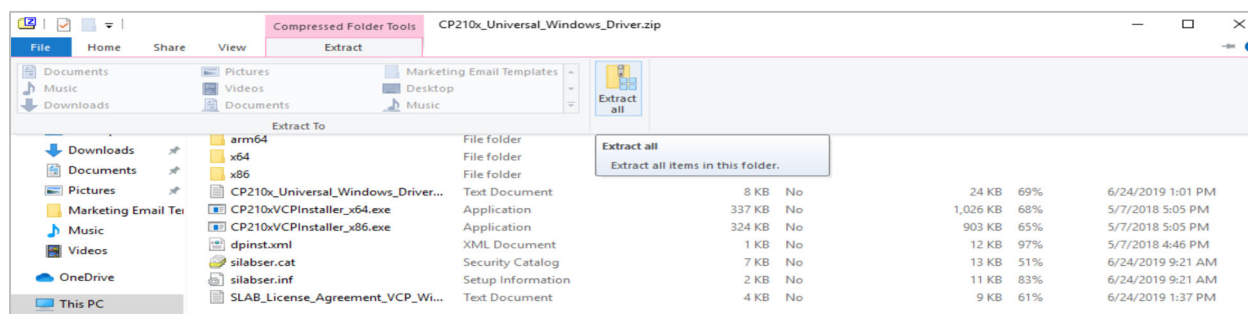
c. Windows 7

d. Hold the Windows key on the keyboard and press the Pause/Break key.

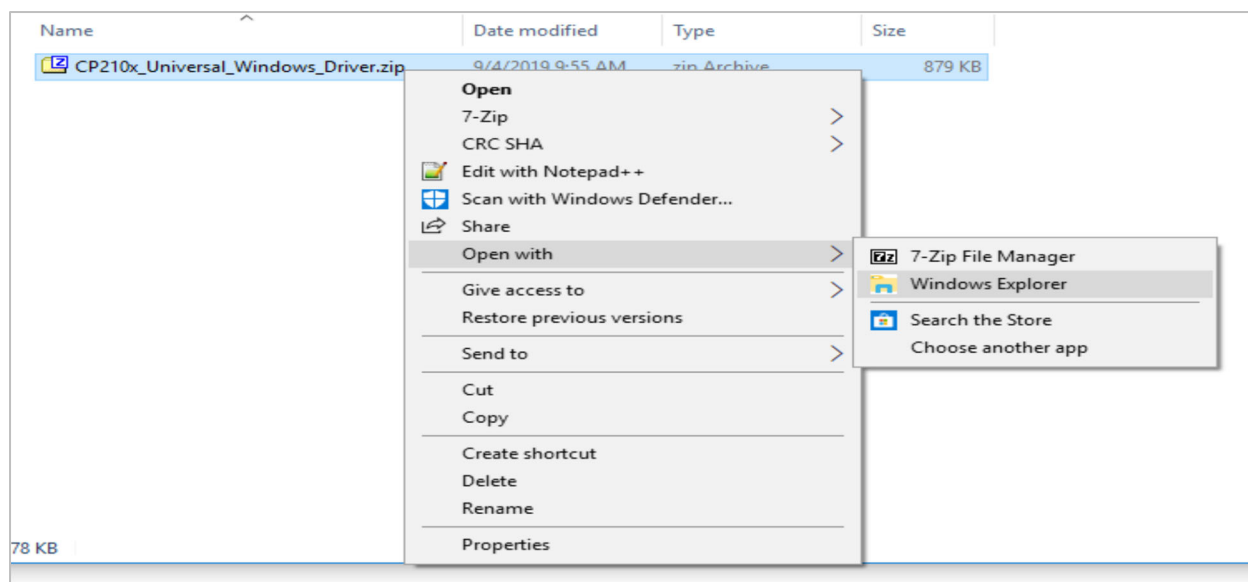
2. Open the drivers file. This will be a compressed folder that needs to be extracted before installing.
3. Extract the file following the below for your version of compression software. (make each of these a compressed section to click on to expand?)

a. Default Windows

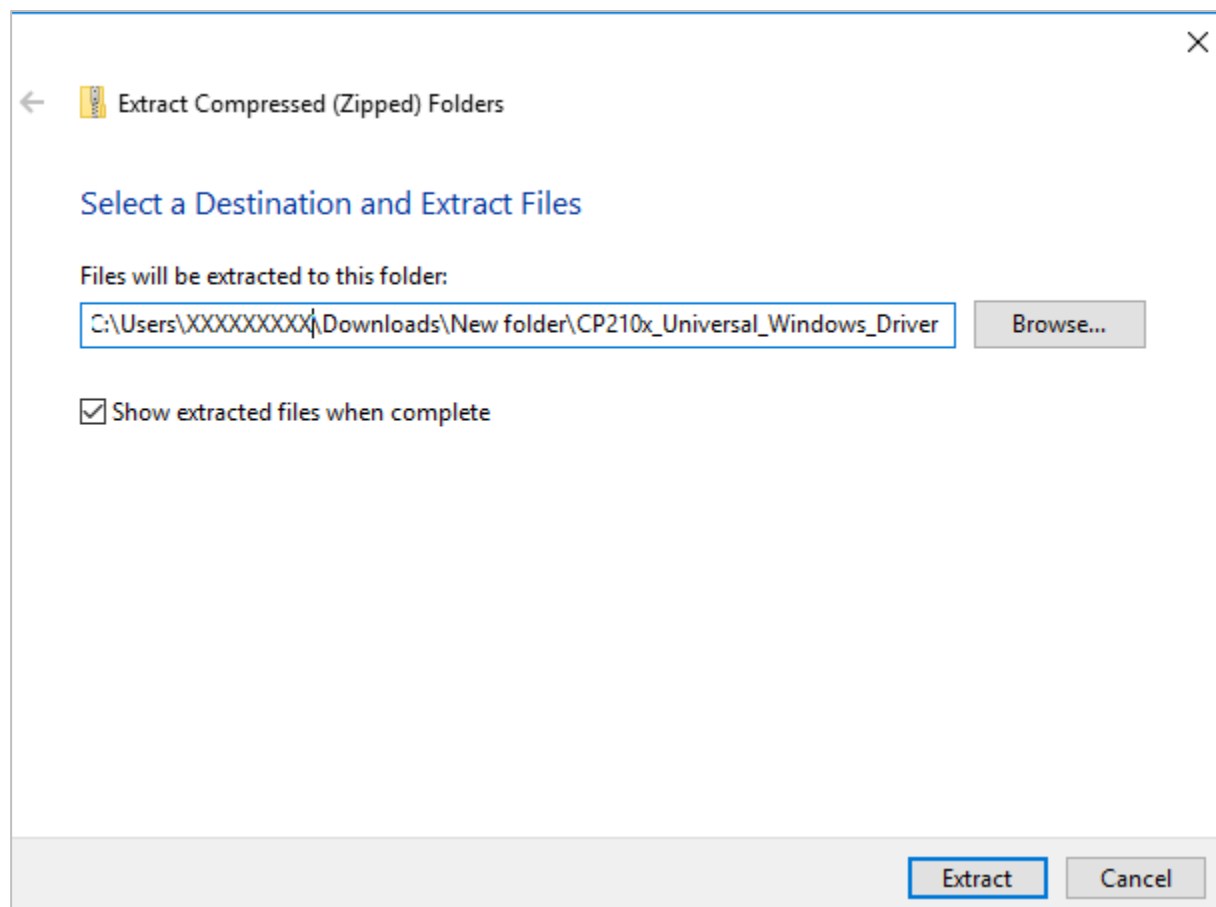
i. Click on Extract all at the top



1. If this is not the default program that opens, you can right click on the file, Open With, Windows Explorer to reach the above.



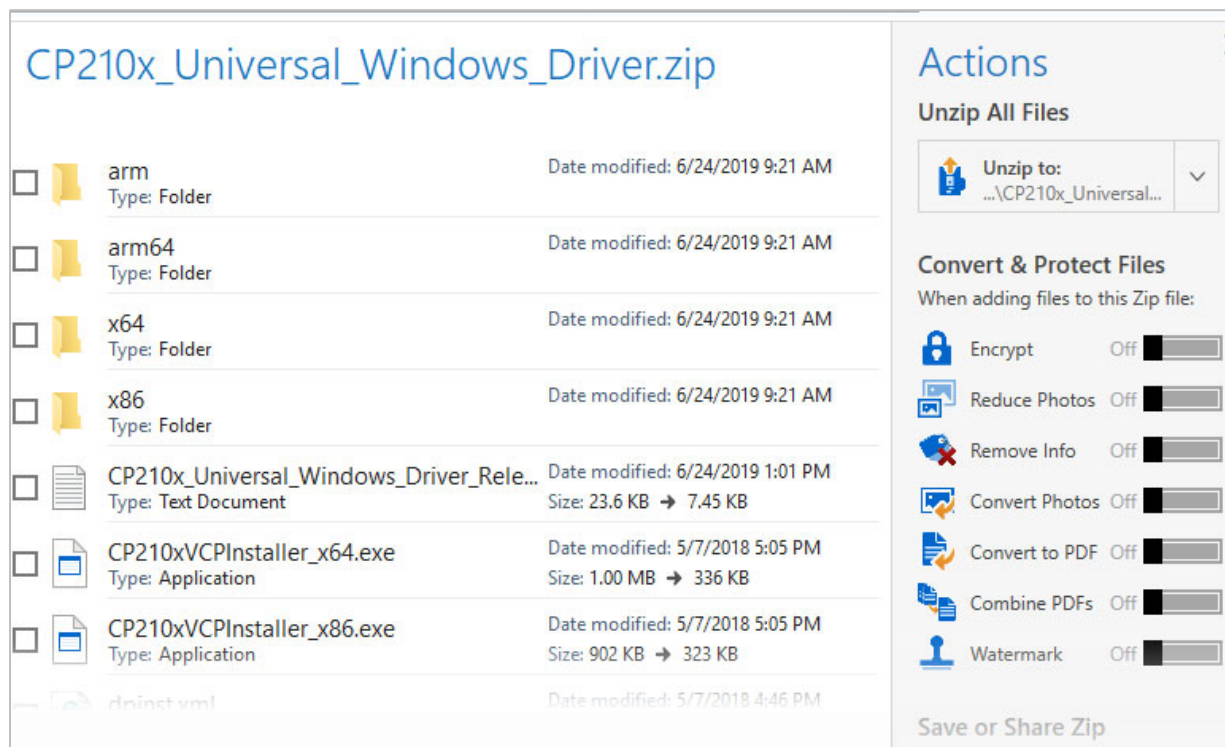
- ii. Keep "Show extracted files when complete" checked as this will automatically show the installer files and click Extract.



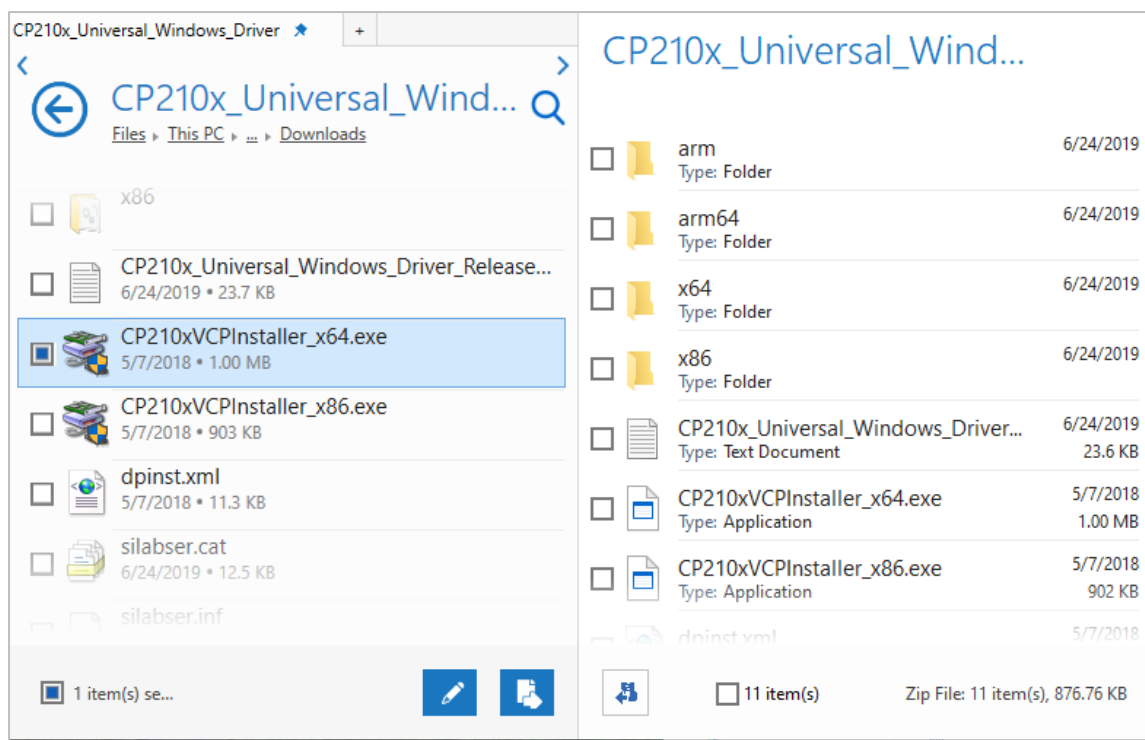
- iii. Once extracted, run the appropriate version of CP210xVCPInstaller_xXX.exe. x64 should work for almost everyone. If it fails, use the x86 version.

b. WinZip

- i. On the right side, click Unzip to: under Unzip All Files

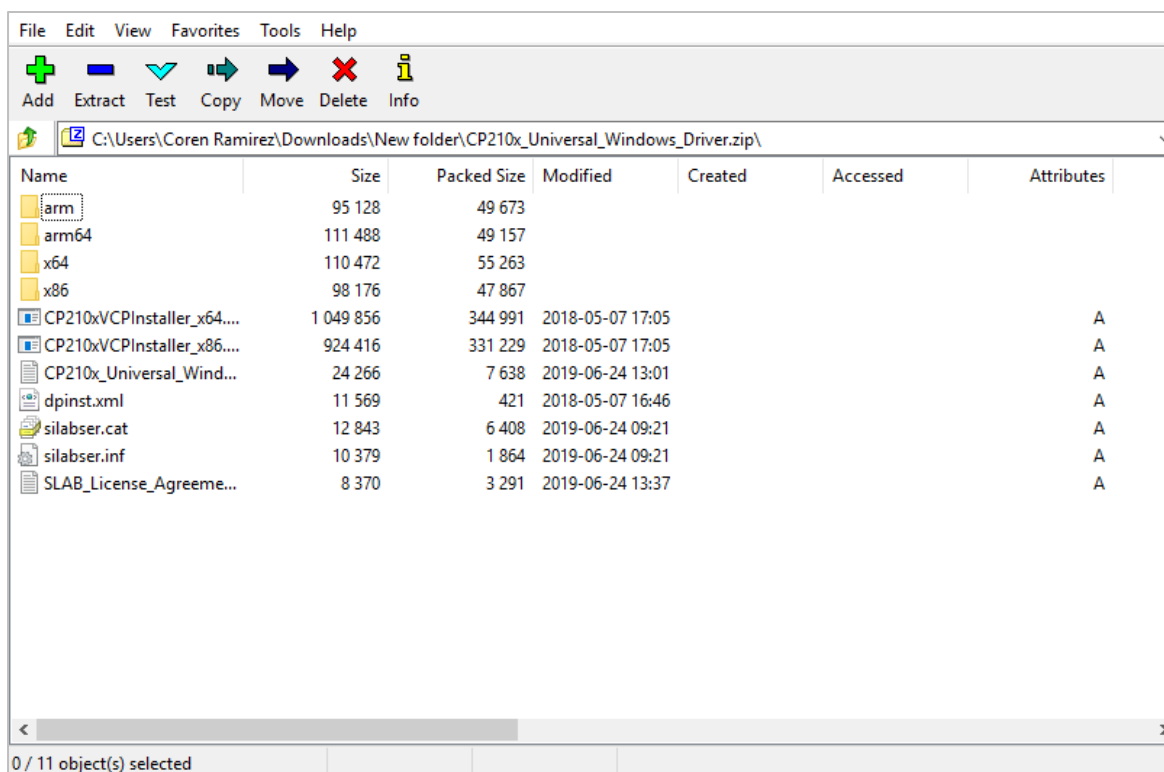


- ii. You should now see options on the left containing the same filters. Run the appropriate version of CP210xVCPInstaller_xXX.exe. x64 should work for almost everyone. If it fails, use the x86 version.

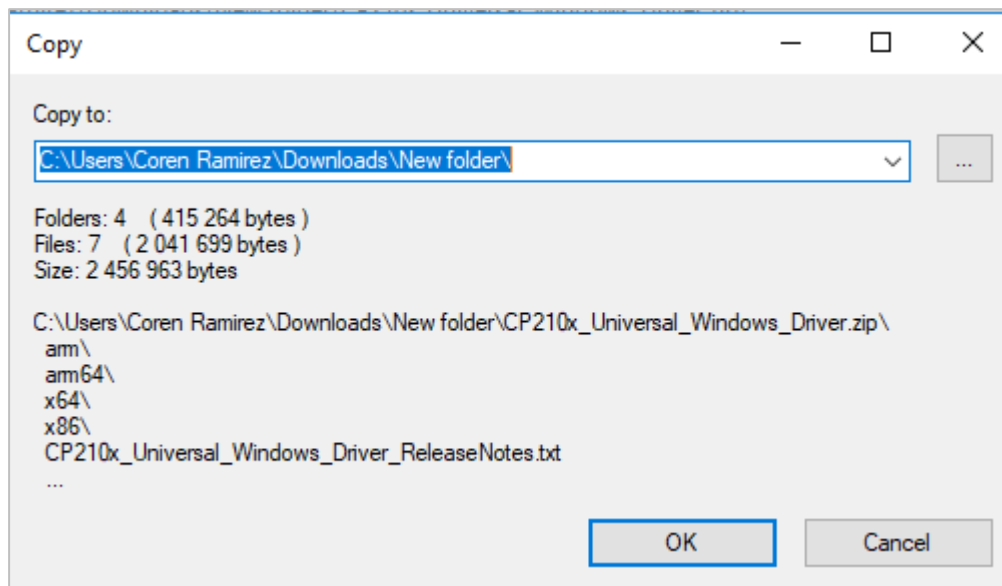


c. 7-Zip

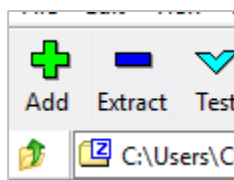
- i. Make sure nothing is selected (highlighted blue) and click Extract in the upper left.



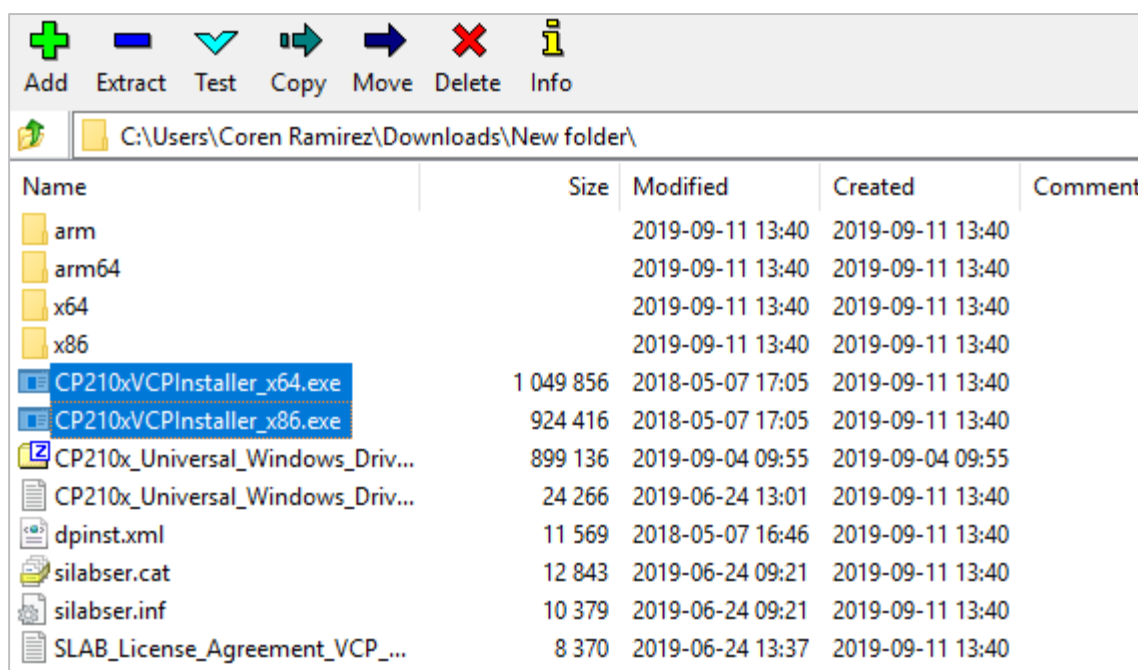
ii. Click Ok



iii. Click the folder with the upwards arrow underneath the Add button



iv. Launcher the correct version of the CP210xVCPInstaller_xXX.exe for your system.

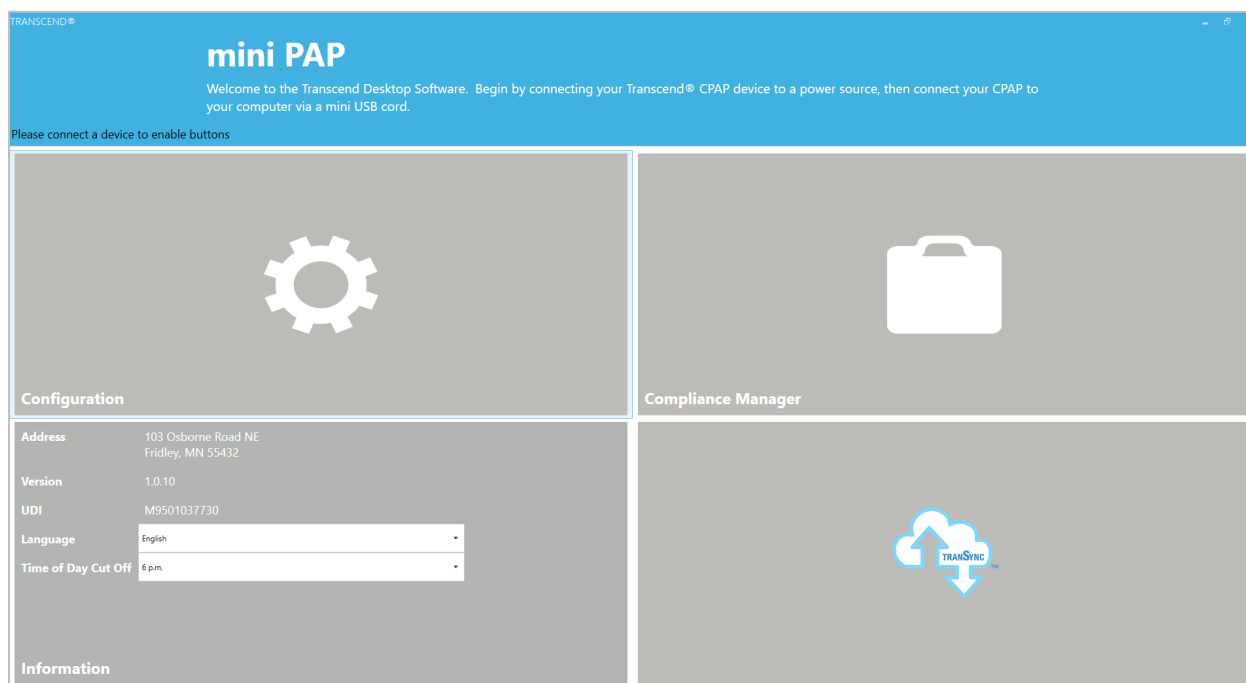


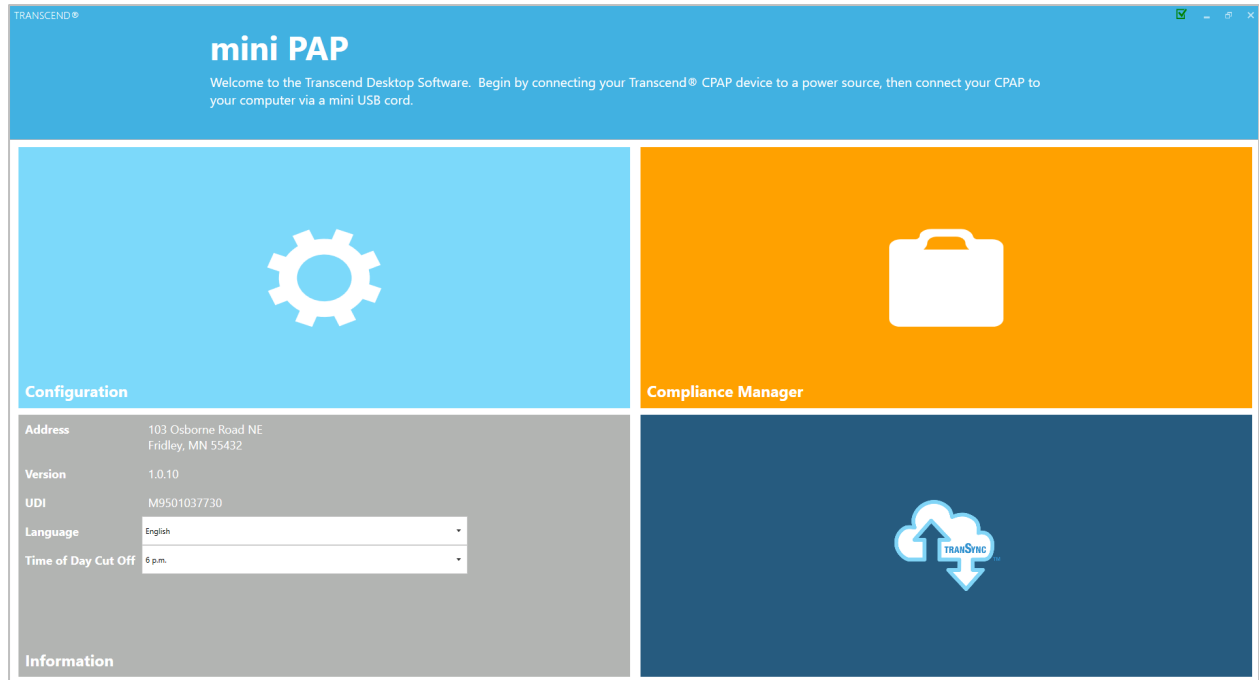
- d. Once extracted, run the appropriate version of CP210xVCPInstaller_xXX.exe. x64 should work for almost everyone. If it fails, use the x86 version.

Name	Date modified	Type	Size
arm	9/4/2019 9:44 AM	File folder	
arm64	9/4/2019 9:44 AM	File folder	
x64	9/4/2019 9:44 AM	File folder	
x86	9/4/2019 9:44 AM	File folder	
CP210x_Universal_Windows_Driver_Relea...	9/4/2019 9:44 AM	Text Document	24 KB
CP210xVCPInstaller_x64.exe	9/4/2019 9:44 AM	Application	1,026 KB
CP210xVCPInstaller_x86.exe	9/4/2019 9:44 AM	Application	903 KB
dpinst.xml	9/4/2019 9:44 AM	XML Document	12 KB
silabser.cat	9/4/2019 9:44 AM	Security Catalog	13 KB
silabser.inf	9/4/2019 9:44 AM	Setup Information	11 KB
SLAB_License_Agreement_VCP_Windows...	9/4/2019 9:44 AM	Text Document	9 KB

- Follow the installation prompts.
- Back on <http://transcend.minicpapsoftware.com/>, click on Software Installer. This will download the launcher.

6. Open the launcher and wait for it to process the current version and it will launch a full screen window.
7. There will be 4 boxes. Configuration, Compliance Manager, Information, TranSync. These will be grey when the miniCPAP isn't detected. When it detects the miniCPAP, they will change to vivid colors, seen below. (Picture of software)
 - a. If this does not happen, please try a different USB port on the computer to rediscover the miniCPAP.







Somnetics® and Transcend are registered trademarks of Somnetics International, Inc. All rights reserved.

© 2020 Somnetics International, Inc.; all rights reserved.

Contact Somnetics International, Inc.

Corporate headquarters	Somnetics International, Inc.
Email	info@somnetics.com
Web	http://www.mytranscend.com/
Telephone	651.621.1800
Toll-free telephone	877.621.9626
Fax	651.204.0064

104040 REV A 2020-03